



John Hall & Company

COMMERCIAL/INVESTMENT PROPERTY □ LAND

www.johnhallco.com

FOR SALE VAITIS PROPERTY

LOCATION: US Highway 331. Snowdoun

SIZE: 27.2 Acres

TERRAIN: Gently Rolling

LAND USE: Residential Homesites

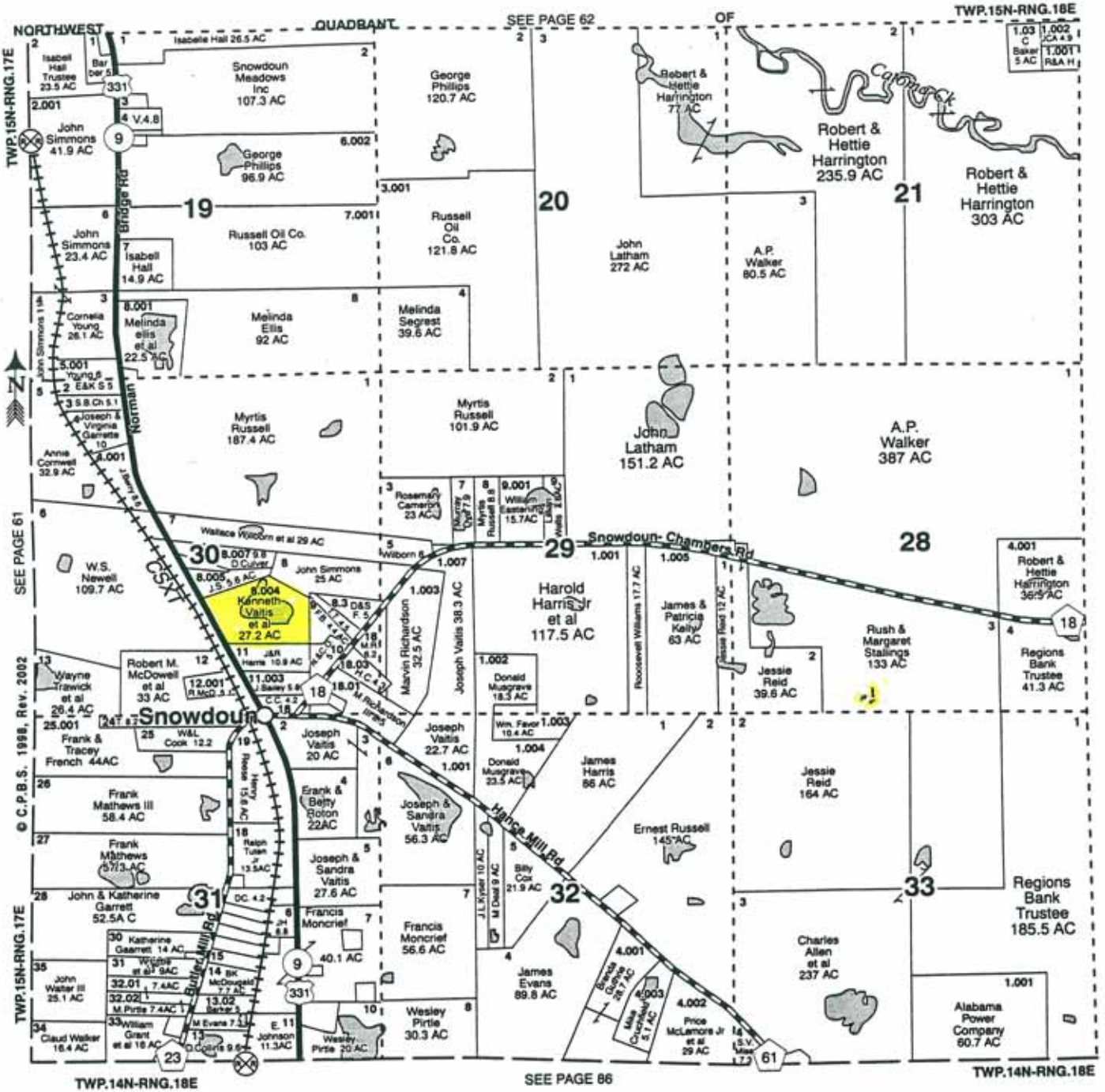
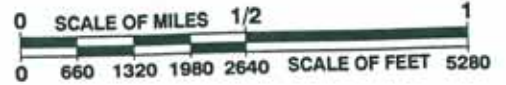
PRICE: \$297,000 or \$10,920 per acre

SPECIAL FEATURES: Very nice rolling land featuring a 6 acre stocked lake and a barn. Only 15 minutes south of town. Buyer could divide into 4 beautiful home sites surrounding the lake.

This company, or any of its agents, will not be held responsible for any false or misleading information. Information is collected by agents from sources that agent deems reliable. Agent has used his best efforts and good faith to obtain reliable information.

TWP.15N-RNG.18E - SOUTHWEST

MONTGOMERY COUNTY, ALABAMA (LOCATOR 15)



SEE PAGE 61

© C.P.B.S. 1998, Rev. 2002

TWP.15N-RNG.17E

TWP.14N-RNG.18E

SEE PAGE 86

TWP.14N-RNG.18E



STATE OF ALABAMA
GEOLOGICAL SURVEY OF ALABAMA

SN
Al
7.5 M

3748 IV SE
(MONTGOMERY SOUTH) R 17 E R 18 E

MONTGOMERY S M

17° 30'

'67

'68

'69

